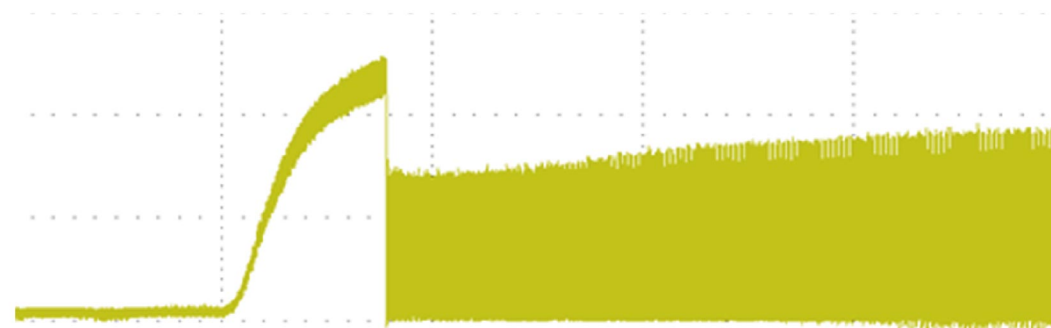


## ST series DC Power Supply

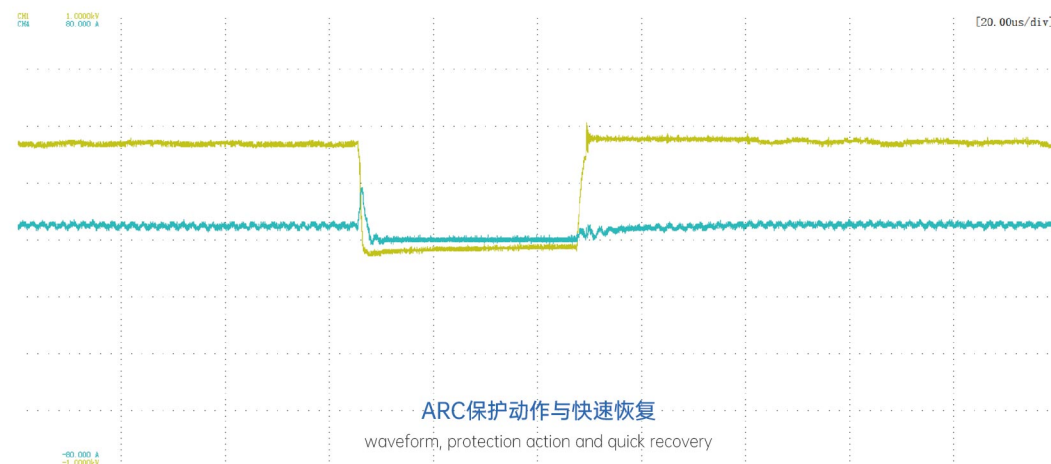
### 技术参数

Technical parameters



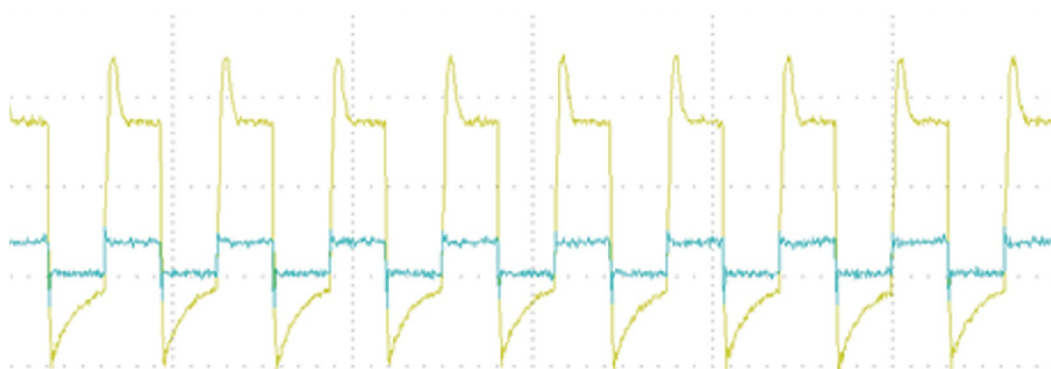
脉冲模式-启动点火电压波形

Pulse mode - start ignition voltage



ARC保护动作与快速恢复

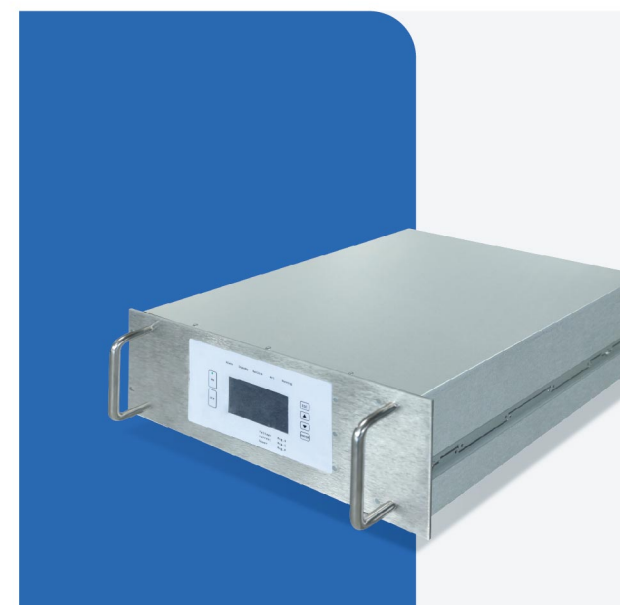
waveform, protection action and quick recovery



脉冲模式-反向电压集成

Reverse voltage integration

SPECIFICATIONS ARE SUBJECT TO CHANGE WITHOUT NOTICE. NOT RESPONSIBLE FOR ERRORS OR OMISSIONS.  
©2023 JIANGSU EASTONE TECHNOLOGY CO., LTD. ALL RIGHTS



## ST-Series DC&Pulse Power Supply

### ST系列直流脉冲电源

ST 系列直流脉冲电源主要应用于直流溅射镀膜领域, 以其优良的控制算法, 能够提供稳定可靠的持续输出, 并对功率、电压、电流、频率和脉冲时间等提供精确的输出控制。

ST-series DC Pulse power supply is mainly used in the field of DC sputtering surface treatment. With excellent control algorithm, it can provide stable and reliable continuous output, and provide precise output control for power, voltage, current, frequency and pulse time.

### ST-2020LD

#### 选型说明 Model definition

输出路数: " ", 1路 "D", 2路  
Output Number: " ", 1路 "D", 2路

输出电压: " ", 0~1000V "L", 0~500V  
Output Voltage: " ", 0~1000V "L", 0~500V

输出功率: "10", 10kW "20", 20kW  
Output Power: "10", 10kW "20", 20kW

最大机型: 20kW  
Max Power: 20kW

机种型号: ST 系列  
Model: ST-Series



## 特征

### Features

- 采用模块化设计,按照行业标准设计。
- 高稳态功率输出,输出稳定性  $\pm 0.2\%$ 。
- 电弧主动抑制技术。
- 极快的电弧响应。
- 极低的电弧携带能量,小于 0.3mJ/KW 的能量携带。
- 反向电压集成。
- 更宽范围的参数调节功能。
- 丰富的通讯接口。
- 控制指令的快速响应。
- It adopts modular design and is designed according to industrial standards.
- High steady-state power output. Output stability  $\pm 0.2\%$ .
- Active arc suppression technology.
- Ultimately fast arc response.
- Lowest arc carrying energy, less than 0.3 mJ per 1 KW of output.
- Reverse voltage integration.
- The widest range of parameter settings.
- More communication interfaces.
- Quick response to control commands.

## 技术参数

### Technical parameters

#### ST-Series DC&Pulse Power Supply

型号 Model	ST-2010	ST-2010L	ST-2020L
输入参数 Input parameter			
输入电压 Input voltage	400V - 480V $\pm 10\%$ (3 + PE, No Neutral)		
输入频率 Input frequency	50 / 60Hz(45-65)Hz		
最大输入电流 Max input current	3x25A	3x25A	3x50A
输出参数 Output parameter			
额定输出功率 Rated output power	10kW	10kW	20kW
电压范围 Voltage range	0-1000v	0-500v	
电流范围 Current range	0-25A	0-40A	0-80A
脉冲频率 Pulse frequency	0, 2-100kHz		
脉冲时间 Pulse time	5-495 us		
反向电压范围 Reverse voltage range	0-100V		
工作模式 Working mode	功率、电压、电流 power/voltage/current		
输出精度 Output accuracy	$\pm 0.5\%$		
重复精度 Repeated accuracy	$\pm 0.2\%$		

SPECIFICATIONS ARE SUBJECT TO CHANGE WITHOUT NOTICE. NOT RESPONSIBLE FOR ERRORS OR OMISSIONS.  
©2023 JIANGSU EASTONE TECHNOLOGY CO., LTD. ALL RIGHTS

## 技术参数

### Technical parameters

#### ST-Series DC&Pulse Power Supply

型号 Model	ST-2010	ST-2010L	ST-2020L
接口参数 Interface parameter			
LCD	支持 Supported		
RS232	支持 Supported		
PROFIBUS/RS485	支持 Supported		
Ether CAT	支持 Supported		
模拟量输入 Analog input	支持 Supported		
ARC检测 ARC Detection			
Imax/U&恢复时间 Imax/U& recovery time	1-100ms		
Imax电流范围 Imax current range	10-130%In		
U&I电压范围 U&I voltage range	0-90%Un		
U&I电流范围 U&I current range	5-100%In		
DU恢复时间 DU recovery time	10-1000us		
DU电压范围 DU voltage range	10-90%Un		
ARC能量 ARC energy	<0.3 mJ/kW		
ARC处理时间 ARC processing time	<100ns		
点火 Ignition			
主动点火电压 Active ignition voltage	1250V	625V	
被动点火电压 Passive ignition voltage	1000V	500V	
环境 Environment			
工作环境温度 Operating temperature	+5°C~+45°C		
存储环境温度 Storage temperature	-25°C~+55°C		
相对湿度 Relative humidity	5-85%无冷凝 No condensation		
气压 Atmospheric pressure	86-106kPa		
其他 Others			
防护等级 Protection class	IP40		
外形尺寸(WxHxL) Dimensions	480mm x 178mm x 730mm		480mm x 356mm x 730mm
重量 Weight	60kg	75kg	75kg
效率 Efficiency	> 90%		
冷却方式 Cooling mode	水冷 Water cooling		